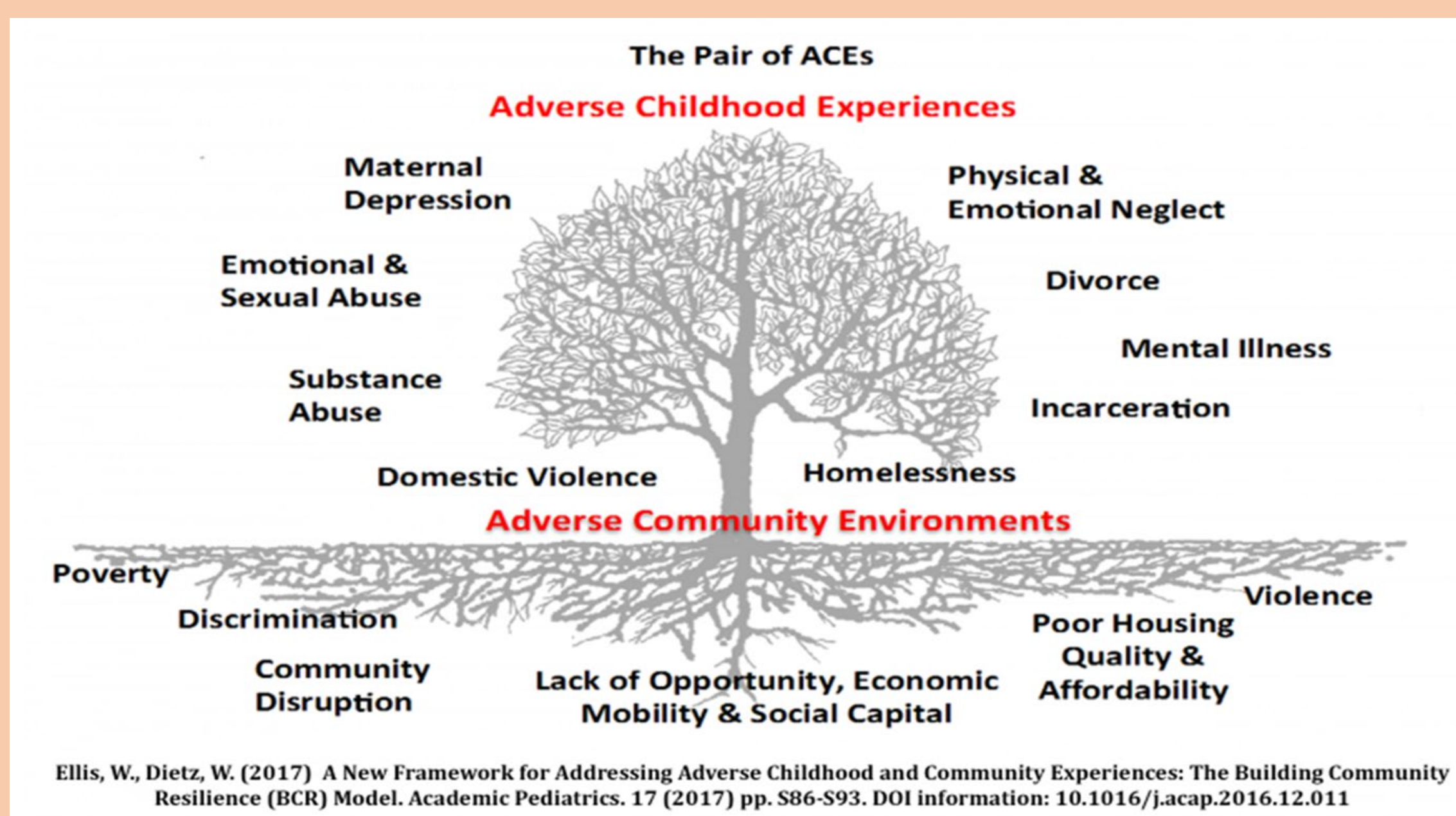


Increasing community safety and wellbeing through local leadership

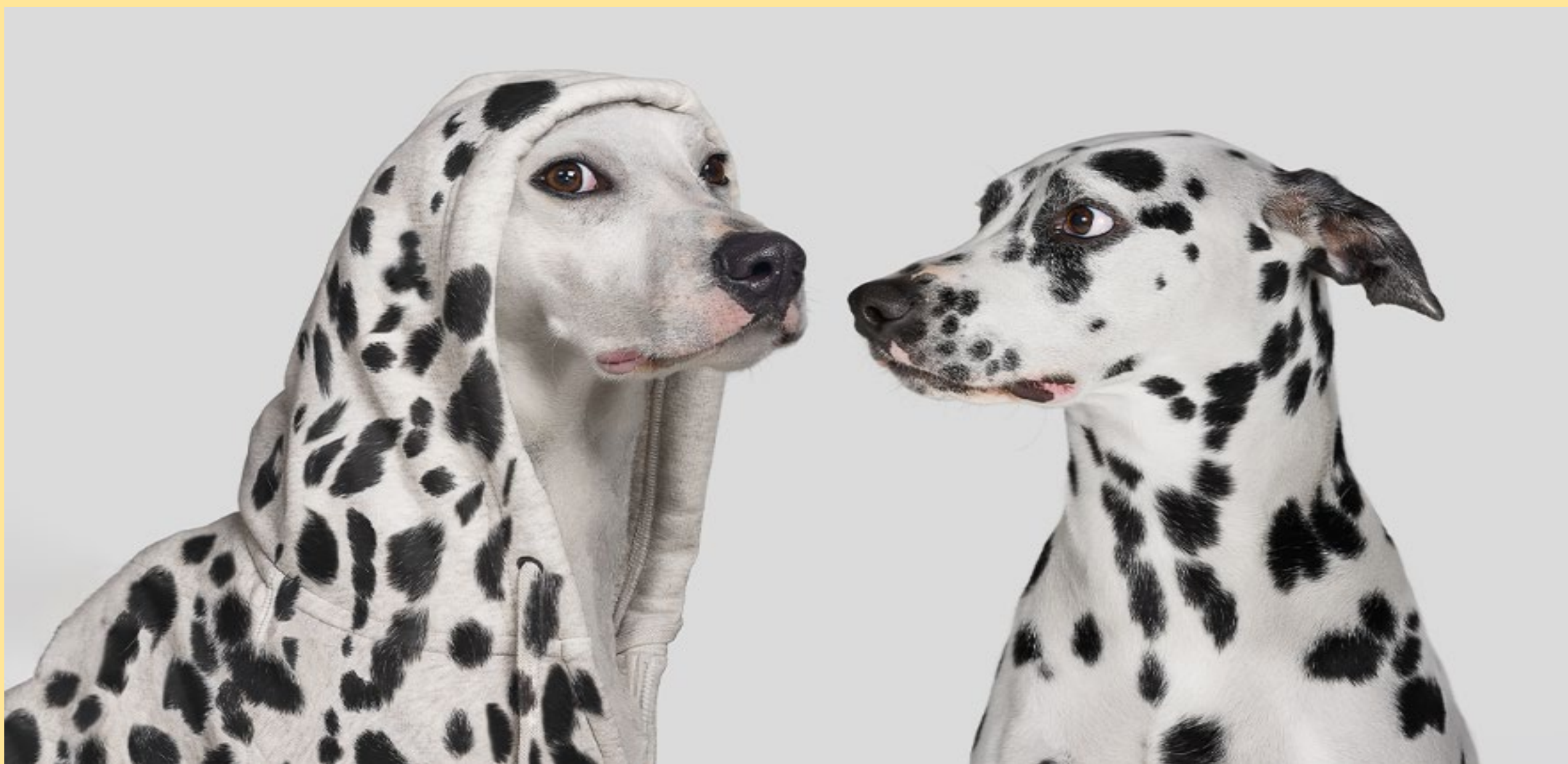
Research Question

What are the leadership behaviours that enable systems' change necessary to support pathways towards increasing community safety and wellbeing?

We understand so much more



Social Constructionism



References

Armstrong, A. J., Holmes, C. M., & Henning, D. (2020). A changing world, again. How Appreciative Inquiry can guide our growth. *Social Sciences & Humanities Open*, 2(1), 100038.

Cooper, H. L. (2015). War on Drugs Policing and Police Brutality. *Substance Use & Misuse*, 50(8-9), 1188-1194. <https://doi.org/10.3109/10826084.2015.1007669>

Cooperrider, D. L., & Fry, R. (2020). Appreciative Inquiry in a pandemic: An improbable pairing. *The Journal of Applied Behavioral Science*, 56(3), 266-271. <https://journals.sagepub.com/doi/full/10.1177/0021886320936265>

Ellis, W. R., & Dietz, W. H. (2017). A new framework for addressing adverse childhood and community experiences: The building community resilience model. *Academic Pediatrics*, 17(7), S86-S93.

Gergen, K. J., & Gergen, M. (2007). Social construction and research methodology. *The SAGE Handbook of Social Science Methodology*, 461-478. <https://doi.org/10.1080/105952616688087>

Grieten, S., Lambrechts, F., Bouwen, R., Huybrechts, J., Fry, R., & Cooperrider, D. (2018). Inquiring into appreciative inquiry: A conversation with David Cooperrider and Ronald Fry. *Journal of Management Inquiry*, 27(1), 101-114. <https://journals.sagepub.com/doi/abs/10.1177/1056492616688087>

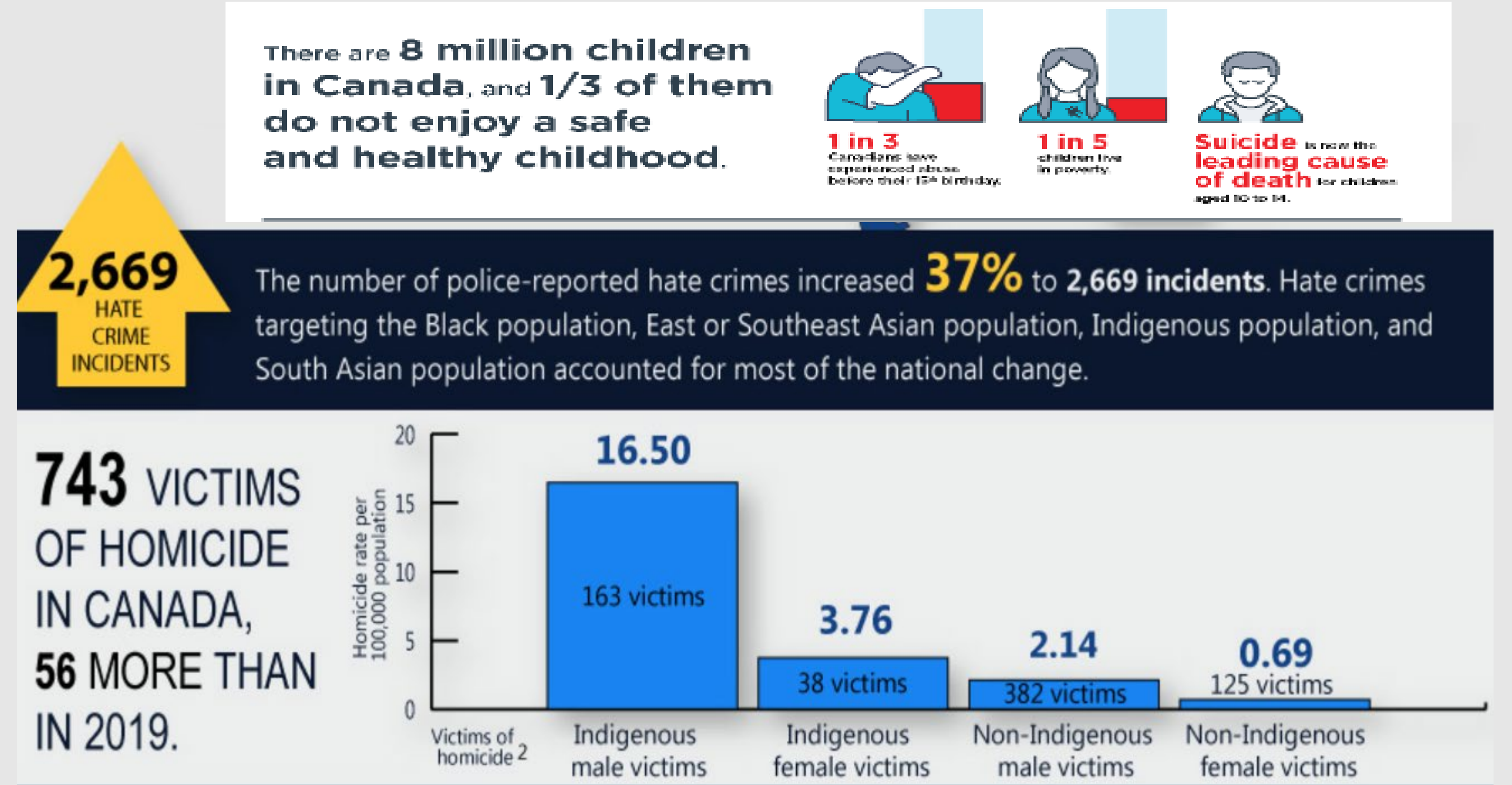
Hamel, G., & Zanini, M. (2014). Build a change platform, not a change program. Retrieved November 12, 2014. <https://www.gar.com/insights/build-a-change-platform-not-a-change-program>

Karatas-Ozkan, M., & Murphy, W. D. (2006). Venturing as a relational process. *Relational Perspectives in Organization Studies: A Research Companion*, 112-137. https://www.ejournals.com/display/10.4018/9781418414074_5

Kelly, A. (1998). Concepts of professions and professionalism. In *The Social Construction of Community Care* (pp. 78-93). Palgrave, London. https://link.springer.com/chapter/10.1007/978-1-349-14107-4_5

Bree Claude
2nd Year Doc Soc Sci
February 12, 2023

Call to Action

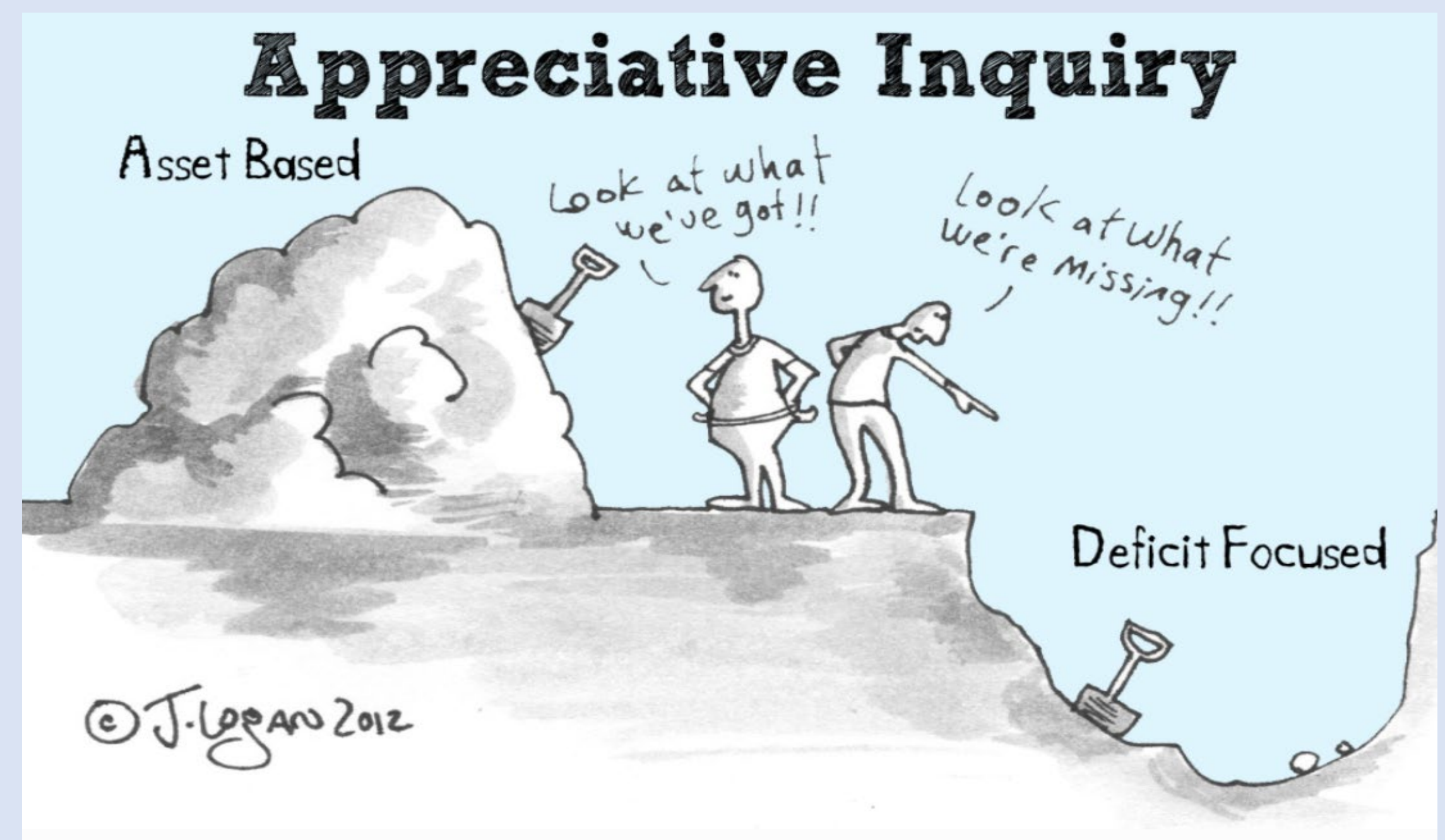


Research Assumptions

While we better understand the work that needs to take place to increase community safety and wellbeing, local community change efforts are limited or propelled by local actors' mindsets, relationships and ways of being.

Opportunities exist at the local leadership level and is not necessarily in the hands of formal, local leaders.

Methodology



Methods

